

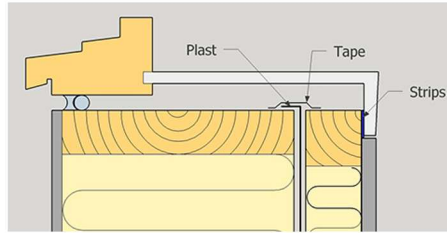
Installation Instructions

Deco Smygplate WS1 / LS2

deco
systems



Make sure the window is sealed according to Norwegian Standards requirements



Cut vapor barrier between outer wall on casing wall. End with vapor barrier tape



Measure length and cut profile
Note Add 5.5 cm to each side of bottom and top profile



Check level against plasterboard
Profilecorner must be highest point



Refill the stud with Deco strips if needed (only WS1)



Measure the depth of the window jamb extension



Adjust extension jambs depth with split saw



Place a thin strip of Adefix+ glue in the window groove. Fit the bottom profile and check the angle



When the angle is 90 degrees, tighten the bottom profile



Apply Adefix Plus glue in all 4 corners with approx. 2 mm opening between side profiles and top / bottom profile



Mount the side profiles and finally the top profile



Tighten side profiles. There should be a maximum of 20 cm between the screws



Refill with glue if necessary. Wipe off excess glue with Vipes



Tighten remaining profiles. Mount plasterboard

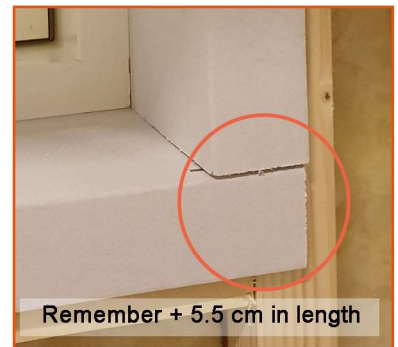


Sparkle and apply drywall tape to all joints

LET THE DECO SMYGPLATES CLIMATE 24 HOURS BEFORE ASSEMBLY
REMEMBER MIN. 15 ° C AT INSTALLATION

Tips & Tricks

1. Deco Smygplate is easiest to mount if you install them before mounting plasterboard
2. To save time on the painting work, the profiles can be painted before assembly
3. Cut both upper and lower profile at the same time, as they are equal
4. Measure side profiles from inside lower and upper grooves, subtract 2 mm on each side and cut these
5. First mount the lower profile using an try square, then mount the side profile using a try square and finally mount top plate by try square
6. The profile can be joined. Remember to apply glue as well as spackling paste and drywall tape



How to paint Deco smygplater

Step 1: Prepare

Start by cleaning. Remove dust, dirt and grease stains from the substrate with suitable soap. Make sure the substrate is clean, firm and dry.

First, you flick with Spackling paste Light and perforated drywall tape. Then you flick with Spackling paste Medium (refill).

Finally, you flick with Spackling paste Light as leveling.

Remove excess putty with sandpaper 180 grit and remove the dust.

1. Clean
2. Apply Spackling paste
3. Sanding and remove dust

Step 2: Priming

To get a smoother surface it looks better to prime once with the same roll quality used for the top strokes. Then it will be easier to get a nice and lasting result. Prime only once.

Step 3: Paint

To get good cover and best durability, paint 2 times. Between the coats we recommend sanding lightly with a fine sandpaper 180 grit, and grout with painter grout. This is done to remove dust that may have become attached to the paint after the first coat.

This is especially important if you choose a glossy paint.

1. Paint once
2. Sanding lightly
3. Remove dust
4. Paint the last coat

Glue Adefix Plus for use on tracks and joints.
Consumption: 20 lm profile per cartridge

