

**DOMOSTYL®**



*looks & durability*





## INDEX

Discovering DOMOSTYL®	p. 2
Creating your difference	p. 4
Creating your desires	p. 18
DOMOSTYL®	p. 20
■ Technical data	p. 22
■ Range	p. 24
DOMOSTYL® CUSTOMIZED	p. 32
■ Technical data	p. 36
Installation	p. 38
DOMOSTYL® worldwide	p. 40
NMC	p. 42

# DISCOVERING DOMOSTYL®

Looks & durability



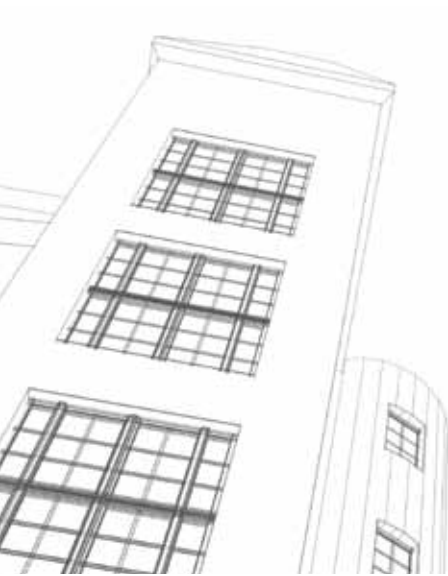
When it comes to construction, man has always been guided by the search for beauty and for long-lasting solutions. Whereas in the past, the perception was often that beauty meant splendour, regardless of any financial consideration, the economic demands of today's world often force us to opt for standardized solutions. Our creativity is also influenced by such imperatives as respect for the environment and the desire to save energy, and, therefore, improve the insulation of building.

That is why NMC offers you intelligent materials, which are both aesthetically pleasing and long-lasting, while preserving the environment. Ingenious products coupled with leading-edge technology have guaranteed our reputation for over half a century. Our basic skills relate to the development, production and distribution of technical foams. Many of these products, resulting from the most modern technologies, have earned a place in various areas of the construction sector, be it for decoration, protection or insulation. This is notably the case when it comes to embellish façades.

In order to satisfy your most diverse desires in the field of façade decor, we offer two product concepts. DOMOSTYL®, our standard concept based on polyurethane, is characterized by its low cost and great versatility. DOMOSTYL® CUSTOMIZED, on the other hand, is an ingenious concept offering reliable made-to-measure solutions for everyone who wants to give their home an even more personal mark. DOMOSTYL® and DOMOSTYL® CUSTOMIZED have been subjected to the most stringent tests by renown control bodies, recognised for the CE mark of approval and members of the European Organisation for Technical Approvals (EOTA). On the basis of these tests, NMC offers a 10-year warranty on all its products in the DOMOSTYL® and DOMOSTYL® CUSTOMIZED ranges.

DOMOSTYL®: the security of esthetical and quality products

- over 50 years of experience in the production of synthetic foams
- over 15 years on the market with DOMOSTYL®
- permanent innovation
- attentive and high-quality service
- local competence
- products tested by the strictest independent institutes



# CREATING YOUR DIFFERENCE

Différent

Creative

Unique







Resistant

Easy

Responsible

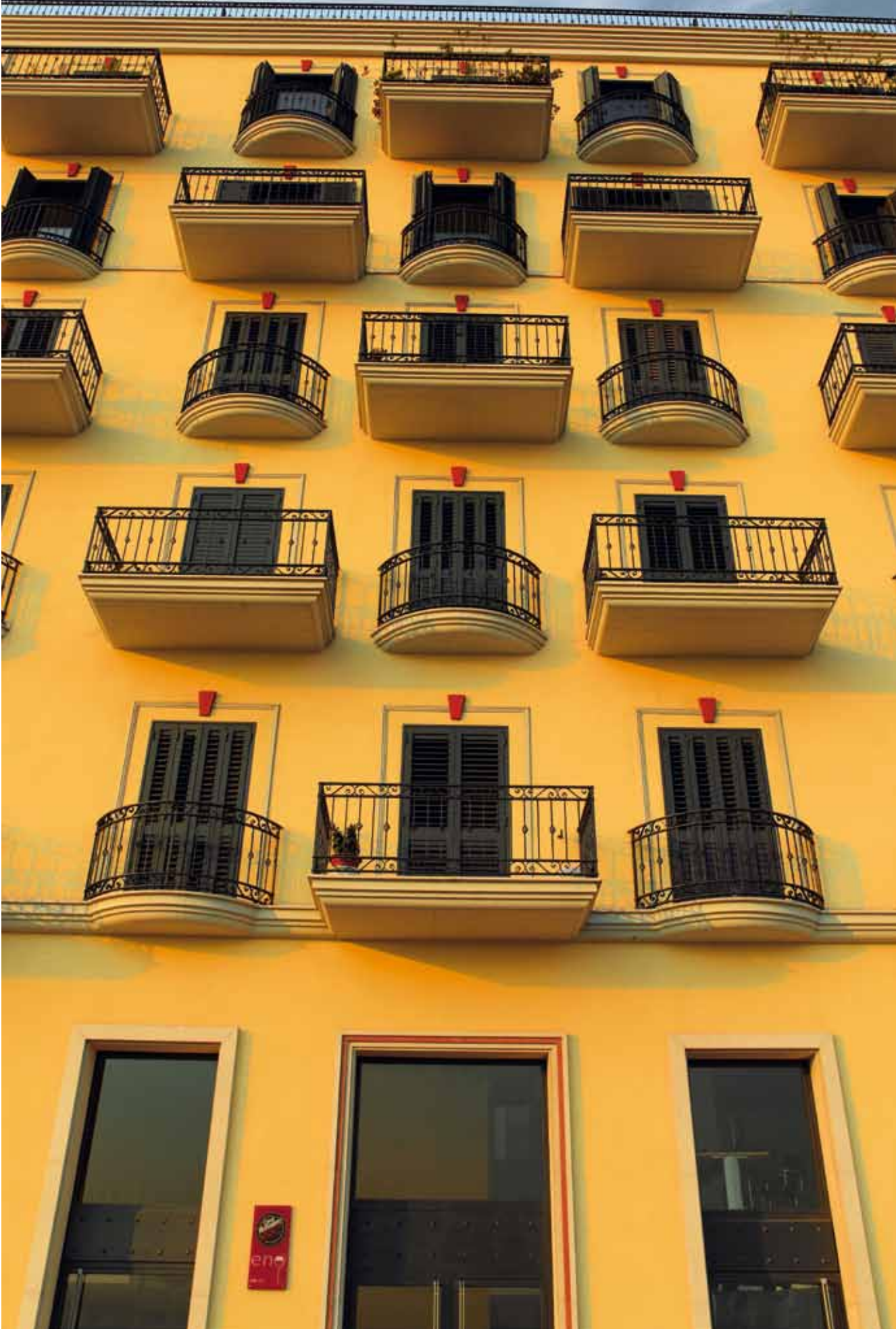




# DIFFERENT

DOMOSTYL® and DOMOSTYL® CUSTOMIZED enable you to give your façades your own personal mark.







# CREATIVE

Give your buildings an extra dimension! DOMOSTYL® and DOMOSTYL® CUSTOMIZED give depth to your façades and free rein to your creativity.







## UNIQUE

From floor to ceiling, DOMOSTYL® and DOMOSTYL® CUSTOMIZED will give your building unequalled good looks and improve curb appeal.









## RESISTANT

Thanks to the talents of our engineers, DOMOSTYL® and DOMOSTYL® CUSTOMIZED are resistant to the elements, and guarantee ever-lasting defect-free and weather-resistant products.







## EASY

The product is so light and so easy to cut that it guarantees you ease of installation. The adhesives dry quickly, meaning that rapid progress can be made at the project site.







## RESPONSIBLE

NMC helps protect the environment and strives to be a responsible player within the industry by carefully selecting the materials and employ strict manufacturing processes.









## CREATING YOUR DESIRES

Give your façade all the timeless elegance of a headers. Dress your windows with a frame and a window-sill. Use a stringer-course to add structure to your surfaces...

DOMOSTYL® CUSTOMIZED and DOMOSTYL® offer you virtually unlimited possibilities. All our models are easy to install.

Stringer-course

Keystone

Toothing stone

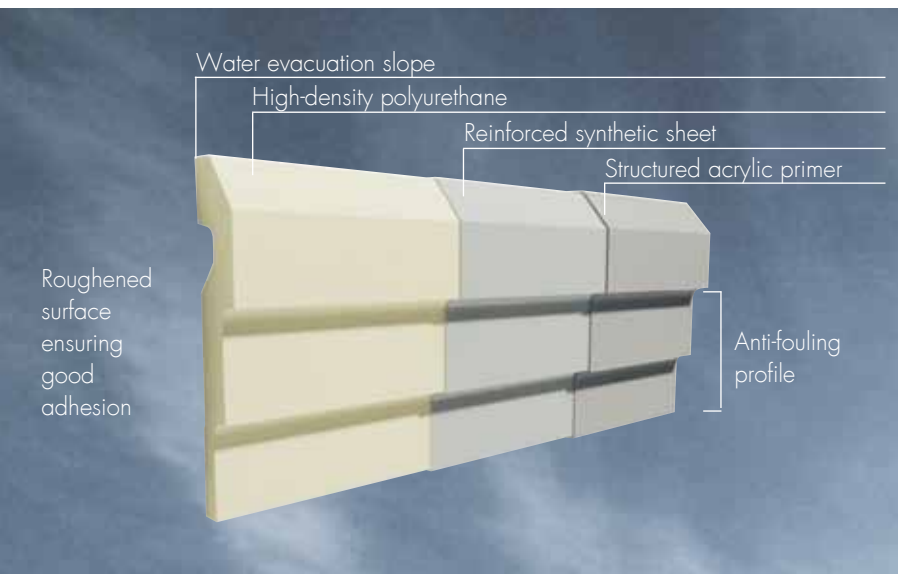
Corbels

Headers

Door and window frames

Window-sills





# DOMOSTYL®

Quick & versatile





Want to give your façades that personal touch, but looking for a quick, easy solution? Want a high-quality product with an optimum quality/price ratio, without having to go to the trouble of designing new shapes yourself? Then DOMOSTYL®, based on high-density polyurethane, is the answer you're looking for.

The DOMOSTYL® models enable you to finish off façades being renovated or constructed – quickly and easily. These products are sturdy and tough, and they will give style and character to every project, while at the same time combining speed and ease of installation.

Thanks to its consistent, rational range, DOMOSTYL® takes the headaches out of making up your mind, whether you are the project manager or the installer.

The range of DOMOSTYL® decorative elements for façades includes stringer-courses, window sills, frames, headers, tothing stones, corbels and keystones.

DOMOSTYL® offers the following advantages:

- style and character
- rapid and affordable
- sturdy and tough
- rapid delivery
- easy to work with
- good dimensional stability
- high-density polyurethane, reinforced with synthetic protection



# DOMOSTYL®

## Technical data

### CONSTITUENT MATERIALS

- High-density polyurethane foam
- Density: 220 kg/m<sup>3</sup> (13.7 lbs/cu ft)
- Shore D: 35 (average)

### FACTORY FINISH

- Surface finish: grey acrylic primer structured on synthetic sheet.
- The gluing surfaces are roughened to give better adhesion of the glue.

### DIMENSIONS

- Huge choice of products in stock: see page 30
- Length of the mouldings: 2 m



#### INSTALLATION TEMPERATURE

- Implementation temperatures:  
+5°C / +25°C  
41°F - 77°F  
For further information, consult the installation guide.
- Tested utilisation temperatures:  
-20°C / +70°C  
-4°F - 158°F

#### DATA APPROVED BY THE CSTB, FRANCE

- Resistance under 100 kg (220lbs) load:
- Shearing test:  
dry state : 0.60 MPa  
wet state : 0.29 MPa  
rupture between adhesive and concrete.
- Adherence of synthetic coating on PU after ageing : 0,62 MPa

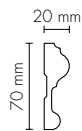
#### FIRE CLASSIFICATION

- B2 according to norm DIN 4102
- Euroclasse E according to norm EN ISO 13501-1

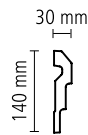




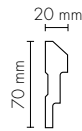
## DOOR AND WINDOW FRAMES



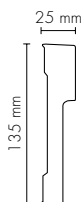
NA



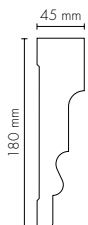
MA1



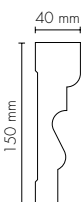
MA2



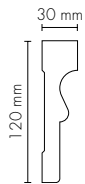
MA3



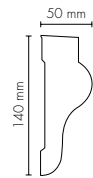
MA10



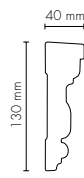
MA11



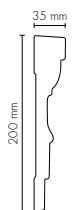
MA12



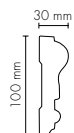
MA13



MA14



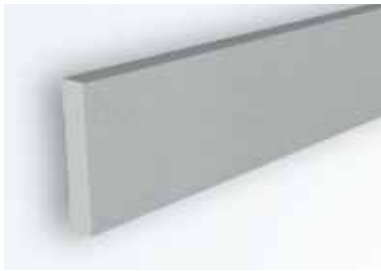
MA15



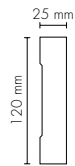
MA16



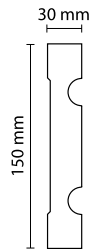
## STRINGER-COURSES



MA20



MA21

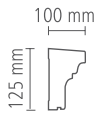


MA22

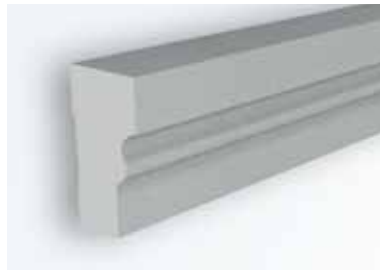




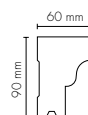
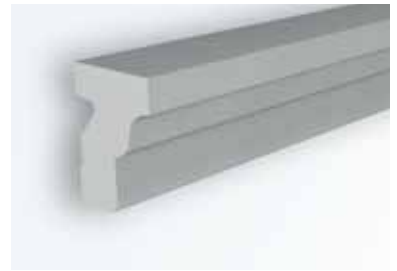
## WINDOW-SILLS



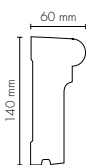
FA10



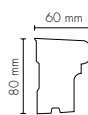
FA11



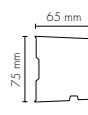
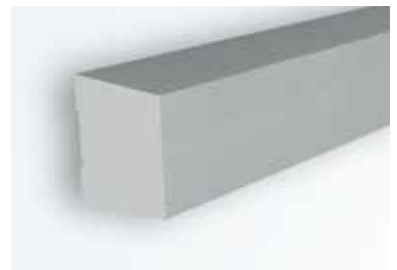
FA12



FA13



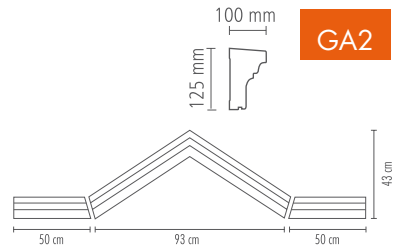
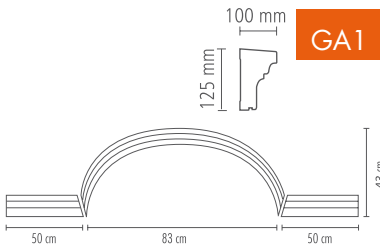
FA14



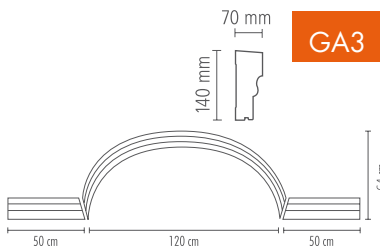
FA15



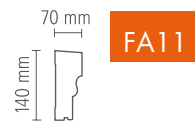
# HEADERS



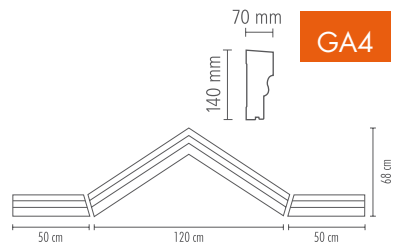




GA3



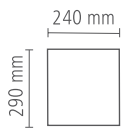
FA11



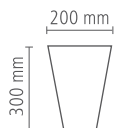
GA4



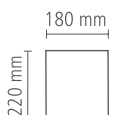
# KEYSTONES



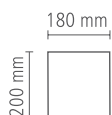
SA1



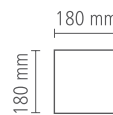
SA2



CA10



CA11

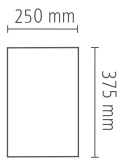


CA12

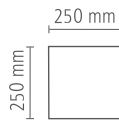




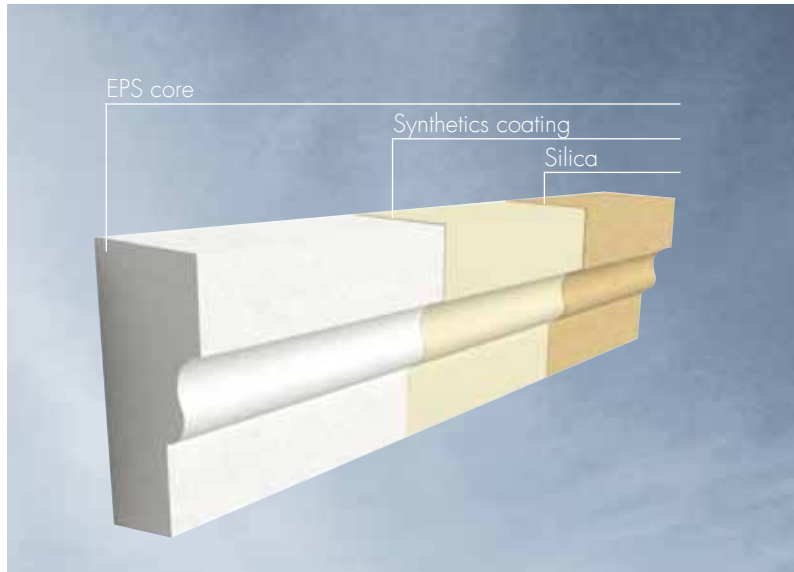
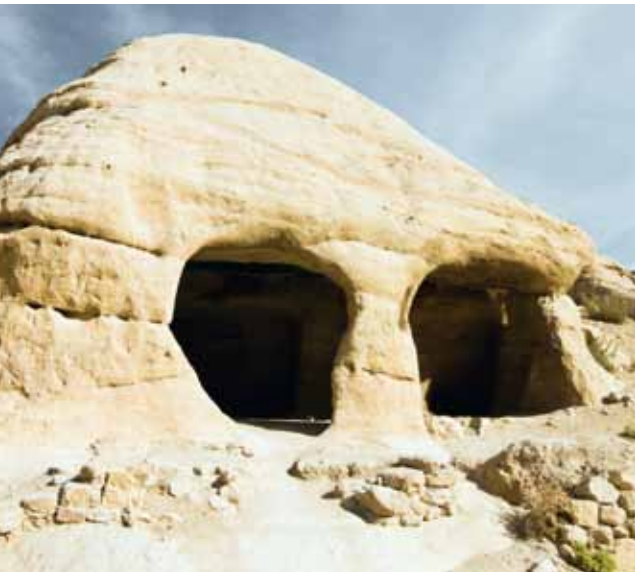
# TOOTHING STONES



BA10



BA11



# DOMOSTYL® CUSTOMIZED

Personalized & unique



Want to give your project that totally unique touch by using innovative materials?

DOMOSTYL® CUSTOMIZED gives you the ideal solution.

DOMOSTYL® CUSTOMIZED, specifically designed for the exterior decor of your building, is manufactured from surface reinforced polystyrene by means of a composite material and coated in a silica sand which is perfectly suited to this type of use.

Our technology allows us to produce a wide variety of shapes and styles for beautifying your façades.

- countless stylistic possibilities
- resistant
- lightweight
- easy to install
- 10-year guarantee



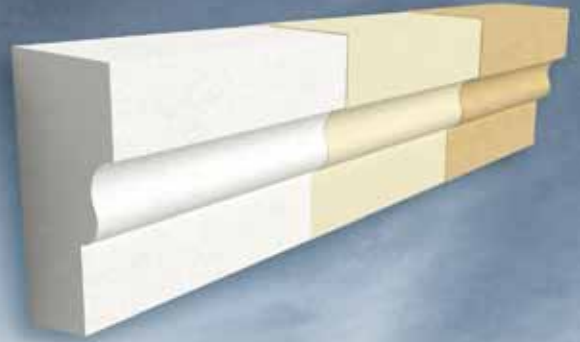


# DOMOSTYL® CUSTOMIZED

Made-to-measure services

Whether your focus is on looks or technique, countless design possibilities are open to you.

Our technology gives you a unique and innovative solution, which combines flexibility in supply with impeccable quality. You design the products, we bring them to life.



### Designs of profiles

Design the product of your choice and send it to us in the form of a sketch showing all the required dimensions or a CAD file. Be sure to specify the gluing surfaces in your drawing so as to guarantee that the results will live up to your expectations.

We will send you a price quotation as promptly as we can.

### CAD modelling

Once you have accepted our quote, our technical staff will model the product in 2D. The CAD files will then be sent to you for your definitive acceptance and signature.

### Production and delivery

Once we receive the confirmation of your order, together with the signed drawings, we will incorporate your request into our production planning. We will quickly send you the confirmation of the exact deadline for the production, along with the date of shipping of the goods. Naturally, NMC's staff will support you at every step throughout this whole process. One of the things that NMC offers is monitoring by its technical advisors. This service includes consulting ahead of the project, but on demand, it can also cover training for the installation of the products. In addition, this separate installation guide is supplied automatically with the goods ordered.



# DOMOSTYL<sup>®</sup> CUSTOMIZED

## Technical data

### CONSTITUENT MATERIALS

- Expanded polystyrene with a highly resistant polyurethane coating
- Density of the expanded polystyrene: 24 kg/m<sup>3</sup> (12.5lbs/cu ft)
- Shore D: 60 (average)

### FACTORY FINISH

- Incrustation by high-pressure projection of grains of silica for a structured surface.

### DIMENSIONS

- Linear products  
Max. dimensions/section:  
2 m x 1,20 m x 0,50 m  
(6.56ft x 4ft x 1.64ft)  
The products can be longer than 2m (6.56ft), but will be manufactured in several sections.  
Minimum thickness: 25 mm (1")
- Circular products  
There is no limitation for the diameter or the radius, but the products might be made in multiple sections





#### INSTALLATION TEMPERATURE

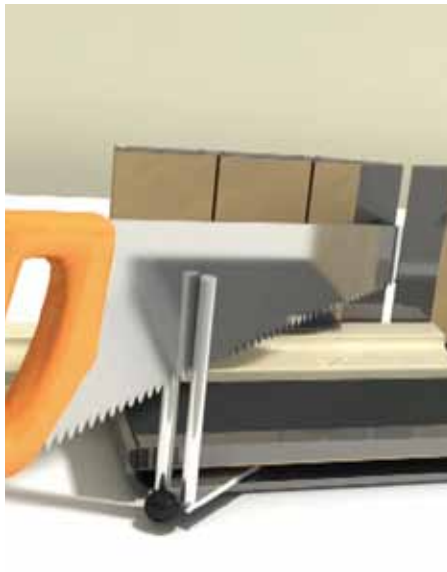
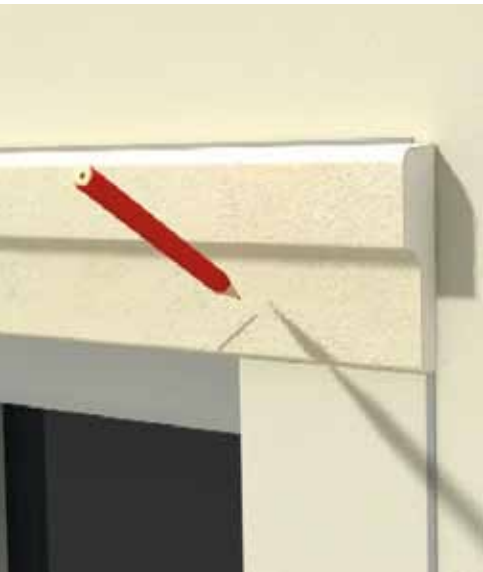
- Implementation temperatures:  
+5°C / +25°C  
41°F - 77°F  
For further information, consult the installation guide.
- Tested utilisation temperatures :  
-20°C / +70°C  
-4°F - 158°F

#### DATA APPROVED BY THE CSTB, FRANCE

- Resistance under 100 kg (220lbs) load:  
delta E 0,18 mm (1/4")
- Shearing test:  
dry state : 0.15 MPa  
wet state : 0.07 MPa  
rupture between adhesive and concrete.
- Adherence of synthetic coating on EPS after ageing :  
0.28 MPa

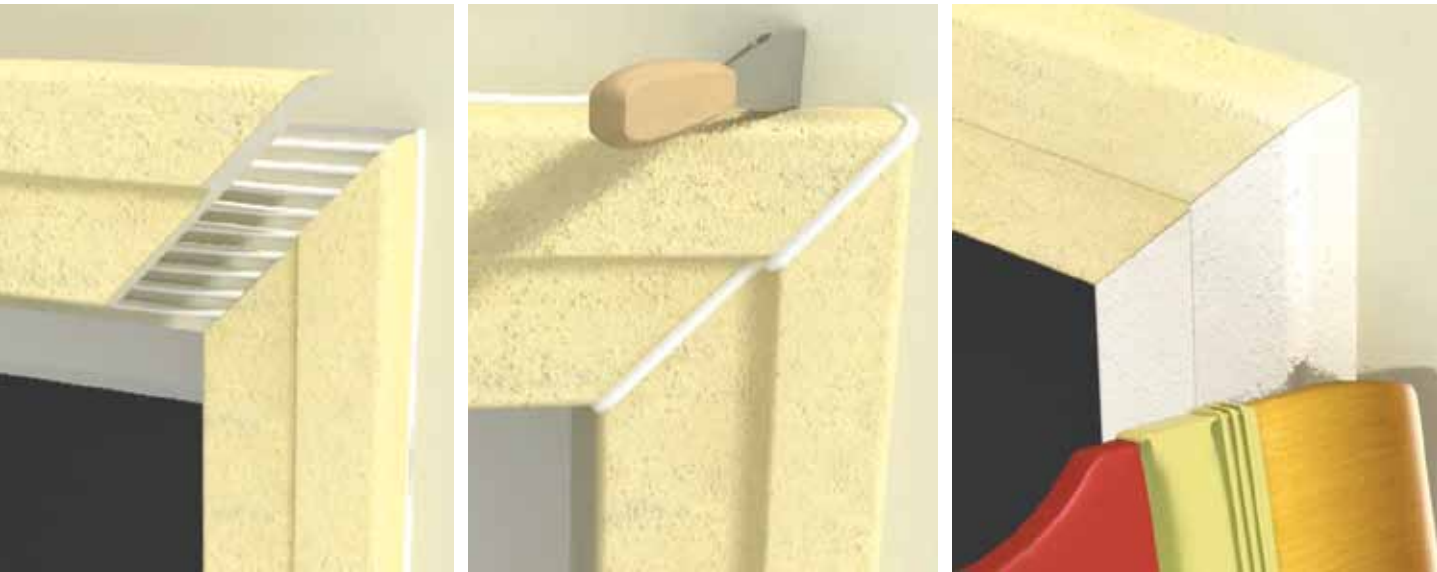
#### FIRE CLASSIFICATION

- B2 according to norm DIN 4102
- Euroclasse E according to norm EN ISO 13501-1



# DOMOSTYL® INSTALLATION

Simple & rapid



The weight of the DOMOSTYL® products constitutes an undeniable advantage, which makes them easier and quicker to install. Adhesion or mechanical fixing for the larger profiles is necessary, but takes no more than a few minutes and can be done by one person.

A detailed installation guide can be obtained via our website, or simply on request.

Finally, to guarantee you a flawless result, training courses for installers are organised at regular intervals by our technical advisors, allowing you to familiarize yourself with the DOMOSTYL® products. DOMOSTYL® and DOMOSTYL® CUSTOMIZED have been tested under the most stringent conditions by renowned control bodies, recognised for the CE mark of approval and members of the European Organisation for Technical Approvals (EOTA). On the basis of these tests, NMC offers a 10-year guarantee on all its products in the DOMOSTYL® and DOMOSTYL® CUSTOMIZED ranges.

For more details regarding the warranty, please refer to the installation guide.





# DOMOSTYL® WORLDWIDE

Presence & reality



ARGENTINA

Pilar Golf Club, Pilar  
Universidad del Salvador,  
Buenos Aires  
Los Cipreses, San Isidro  
Edificio el Mirador, Martinez

AUSTRIA

Hotel Liebetegger, Klagenfurt

BELGIUM

Boutique Louis Vuitton, Brussels

BULGARIA

Guesthouse Municipality, Sofia  
Hotel Renaissance, Sofia

BRAZIL

Place des Vosges, Sao Paulo

CHILE

Mormon Church, Chillan

CZECH REPUBLIC

Hotel Posta, Franzbad  
Hotel Bajkal, Franzbad

FRANCE

Evian Royal Resort, Evian

GERMANY

Weimar Atrium, Weimar  
Kempinski, Heiligendamm  
Arkonaplatz, Berlin

ITALY

Hotel Albergo Valadier, Roma  
Hotel Quisisana,  
Chiancano Terme

JAPAN

Wedding Hotels

KAZAKHSTAN

Diplomatic Estate, Astana

LEBANON

Orphanage, Saida

LUXEMBOURG

Château d'Urspelt

POLAND

Hotel Wilenski, Warsaw  
Shopping Centre, Malbork  
City-Hall, Biala Podlaska

REUNION ISLAND

Housing Estate

ROMANIA

Hotel De Silva, Bucharest

RUSSIA

KDC building, Kaliningrad

SPAIN

Plaza de la Alegria, Madrid

UKRAINE

Izmail Theatre, Odessa Region  
National Bank of Ukraine, Kiev



# NMC

## Industry



### Industrial components and packaging solutions

- Automotive industry
- Construction
- Interior design
- Personal protection

## Insulation



### Insulating applications

- Industrial insulation
  - Heating and plumbing
  - Air-conditioning and refrigeration
  - Solar and high-temperature applications
  - OEM applications
- Domestic insulation
  - Parquet
  - Heating and plumbing
  - Wall, ceilings and floors

## In the home



### Interior decor

- Mouldings and ceiling centres
- Ceiling tiles and liquid wallpaper
- Chair-rails and baseboards
- Columns and pilasters
- Lighting solutions





## On the house

## Around the house

## Sport/leisure



### Outside

- Door and window frames
- Window-sills
- Stringer-courses
- Facade elements
- Keystones and corbels

### Patio and grounds

- NOMAWOOD® decking

### Recreational products

- Games
- Sports
- Gymnastics

